



Raguse+Voss

METALLGIEßEREI GmbH

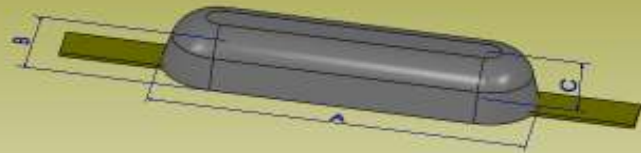
Telefon: (0471) 98209-0 | Telefax: (0471) 98209-10

Beratung · Entwicklung · Produktion

Anoden

Anodes

Weld on Type



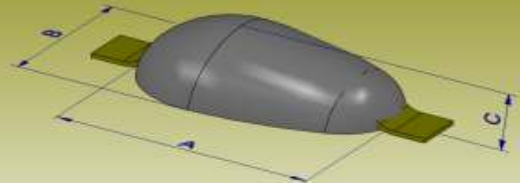
Zink (Zinc)

Bezeichnung Type	Maße (AxBxC) Dimensions (AxBxC)	Gewicht Weight	Loch Mittenmaß (D) hole distance (D)	RV-Artikel-Nr RV-Article-No.
ZN 15/5,5	300 x 90 x 40	5,5 Kg		KOK_00089

Anoden

Anodes

Weld on Type



Zink (Zinc)

Bezeichnung Type	Maße (AxBxC) Dimensions (AxBxC)	Gewicht Weight	Loch Mittenmaß (D) hole distance (D)	RV-Artikel-Nr RV-Article-No.
ZN 1/07	110 x 60 x 26	0,7 Kg		KOK_00016
ZN 2/1	120 x 80 x 23	1,0 Kg		KOK_00015
ZN 10/3 II	236 x 80 x 38	2,6 Kg		KOK_00023
ZN 10/3	170 x 100 x 40	3,0 Kg		KOK_00094
ZN 10/4	236 x 109 x 43	4,0 Kg		KOK_00345
ZN 16/7	300 x 160 x 35	7,0 Kg		KOK_00024
ZN 20/10	300 x 160 x 45	10,0 Kg		KOK_00084

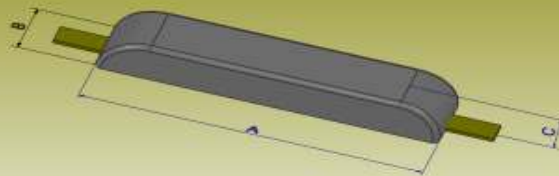
Aluminium (Aluminium)

Bezeichnung Type	Maße (AxBxC) Dimensions (AxBxC)	Gewicht Weight	Loch Mittenmaß (D) hole distance (D)	RV-Artikel-Nr RV-Article-No.
TG0,5AL	120 x 80 x 23	0,5 Kg		KOK_00195
TG1,3AL	170 x 100 x 40	1,3 Kg		KOK_00175
TG4,2AL	300 x 160 x 45	4,2 Kg		KOK_00171
AL 55/10	375 x 224 x 70	10,0 Kg		KOK_00209

Anoden

Anodes

Weld on Type



Zink (Zinc)

Bezeichnung Type	Maße (AxBxC) Dimensions (AxBxC)	Gewicht Weight	Loch Mittenmaß (D) hole distance (D)	RV-Artikel-Nr RV-Article-No.
ZN 3/0,3	95 x 30 x 14	0,3 Kg		KOK_00017
ZN 26/13	465 x 110 x 40	13,0 Kg		KOK_00079
ZN 35/17	520 x 120 x 40	17,0 Kg		KOK_00064
H170Z	600 x 135 x 35	17,0 Kg		KOK_00300
ZN 42/22	540 x 135 x 50	22,0 Kg		KOK_00049
ZN 60/27,5	800 x 120 x 40	27,5 Kg		KOK_00059
ZN 75/34	1000 x 120 x 45	34,0 Kg		KOK_00102
ZN 100/50	1000 x 120 x 60	50,0 Kg		KOK_00098

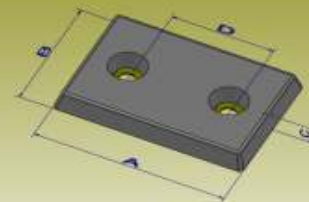
Aluminium (Aluminium)

Bezeichnung Type	Maße (AxBxC) Dimensions (AxBxC)	Gewicht Weight	Loch Mittenmaß (D) hole distance (D)	RV-Artikel-Nr RV-Article-No.
AL 3/0,1	95,5 x 30 x 13,5	0,1 Kg		KOK_00372
RG2,5AL	300 x 90 x 40	2,5 Kg		KOK_00176
RG5,5AL	465 x 110 x 40	5,5 Kg		KOK_00179
AI 30/6	330 x 135 x 50	6,0 Kg		KOK_00368
RG7,2AL	520 x 120 x 40	7,2 Kg		KOK_00187
AL 45/9	680 x 128 x 40	9,0 Kg		KOK_00270
RG12AL	800 x 120 x 40	12,0 Kg		KOK_00191
AI 75/14	1000 x 120 x 45	14,0 Kg		KOK_00238
AI 100/20	1000 x 120 x 60	20,0 Kg		KOK_00240
AI 300/28	1000 x 120 x 80	28,0 Kg		KOK_00236

Anoden

Anodes

Bolt on Type



Zink (Zinc)

Bezeichnung Type	Maße (AxBxC) Dimensions (AxBxC)	Gewicht Weight	Loch Mittenmaß (D) hole distance (D)	RV-Artikel-Nr RV-Article-No.
RV024ZV	200 x 100 x 20	2,4 Kg	110	KOK_00204
FB - 8	300 x 150 x 30	8,0 Kg	160	KOK_00022
RV114ZV	300 x 150 x 40	11,4 Kg	160	KOK_00411
CZ-9E	300 x 150 x 50	13,2 Kg	160	KOK_00169
CZ-9F	300 x 150 x 60	17,0 Kg	160	KOK_00376
CZ-H1-08T	508 x 100 x 53	17,3 Kg	250	KOK_00332
RV199ZV	340 x 180 x 50	20,5 Kg	180	KOK_00260
RV253ZV	300 x 200 x 65	25,3 Kg	160	KOK_00012

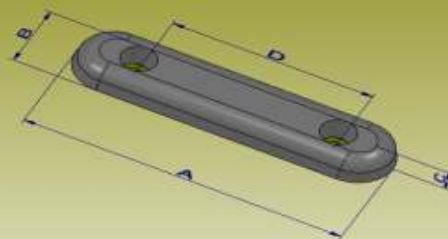
Aluminium (Aluminium)

Bezeichnung Type	Maße (AxBxC) Dimensions (AxBxC)	Gewicht Weight	Loch Mittenmaß (D) hole distance (D)	RV-Artikel-Nr RV-Article-No.
RV014AV	200 x 100 x 30	1,4 Kg	110	KOK_00406
RV023AV	300 x 150 x 20	2,3 Kg	160	KOK_00407
RV034AV	300 x 150 x 30	3,4 Kg	160	KOK_00021
RV055AV	300 x 150 x 50	5,5 Kg	160	KOK_00366
RV062AV	300 x 200 x 40	6,2 Kg	160	KOK_00173
RV068AV	300 x 150 x 60	6,8 Kg	160	KOK_00408
RV093AV	400 x 150 x 50	9,3 Kg	180	KOK_00189
RV101AV	300 x 200 x 70	10,1 Kg	160	KOK_00178
RV124AV	300 x 200 x 75	12,4 Kg	160	KOK_00371
RV130AV	400 x 180 x 70	13,4 Kg	180	KOK_00310
RV151AV	600 x 180 x 52	15,1 Kg	400	KOK_00409

Anoden

Anodes

Bolt on Type



Zink (Zinc)

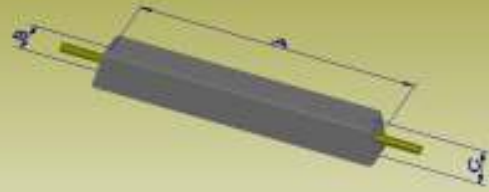
Bezeichnung Type	Maße (AxBxC) Dimensions (AxBxC)	Gewicht Weight	Loch Mittenmaß (D) hole distance (D)	RV-Artikel-Nr RV-Article-No.
RV055ZO	300 x 130 x 30	7,9 Kg	155	KOK_00265
RB - 14	360 x 180 x 45	15,0 Kg	180	KOK_00013
RB - 20	540 x 130 x 53	20,1 Kg	340	KOK_00196
RB - 30	460 x 200 x 64	33,5 Kg	260	KOK_00170

Aluminium (Aluminium)

Bezeichnung Type	Maße (AxBxC) Dimensions (AxBxC)	Gewicht Weight	Loch Mittenmaß (D) hole distance (D)	RV-Artikel-Nr RV-Article-No.
RV057AO	360 x 180 x 45	5,7 Kg	180	KOK_00181
RV081AO	460 x 200 x 44	8,1 Kg	260	KOK_00405
RV079AO	540 x 130 x 53	7,9 Kg	340	KOK_00196
RV156AO	540 x 200 x 65	15,6 Kg	340	KOK_00192

Tank Anoden

Tank Anodes



Zink (Zinc)

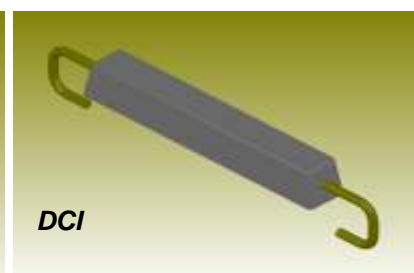
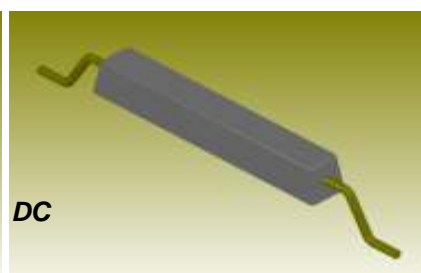
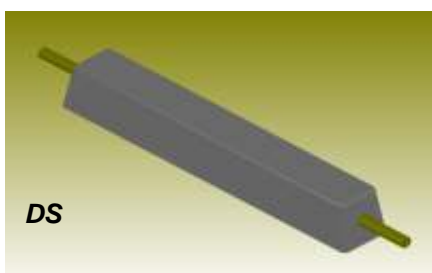
Bezeichnung Type	Maße (AxBxC) Dimensions (AxBxC)	Gewicht Weight	Loch Mittenmaß (D) hole distance (D)	RV-Artikel-Nr RV-Article-No.
TZn 4,5	250 x 50 x 50	4,6 Kg		KOK_00110
TZn 5,4	300 x 50 x 50	5,0 Kg		KOK_00114
TZn 5,8	410 x 44 x 45	5,8 Kg		KOK_00107
KST1050	1000 x 30 x 26	6,0 Kg		KOK_00106
	300 x 60 x 60	7,5 Kg		KOK_00314
TZn 7,5	533 x 51 x 43	7,5 Kg		KOK_00112
TZn 10	533 x 56 x 51	10,0 Kg		KOK_00095
ZT 120	820 x 44 x 45	12,0 Kg		KOK_00108
TZn 14	1100 x 50 x 40	12,0 Kg		KOK_00101
TZn 15	600 x 60 x 60	15,0 Kg		KOK_00109
TZn 19	500 x 70 x 70	16,5 Kg		KOK_00018
TZn 23	1100 x 58 x 52	23,0 Kg		KOK_00103
TZn 30	1200 x 63 x 60	30,0 Kg		KOK_00099

Aluminium (Aluminium)

Bezeichnung Type	Maße (AxBxC) Dimensions (AxBxC)	Gewicht Weight	Loch Mittenmaß (D) hole distance (D)	RV-Artikel-Nr RV-Article-No.
TAL 8/1,7	250 x 59 x 50	1,7 Kg		KOK_00199
TAL 10/3	580 x 40 x 40	2,5 Kg		KOK_00237
TAL 26/5	1100 x 40 x 40	5,0 Kg		KOK_00235
TAL 32/6	600 x 60 x 60	6,0 Kg		KOK_00231
TAL 35/7	1100 x 50 x 40	6,9 Kg		KOK_00233
TAL 55/10	1100 x 56 x 56	10,4 Kg		KOK_00232
TAL 75/13	1200 x 70 x 63	13,5 Kg		KOK_00234

Tank Anoden mit Halter Typ:

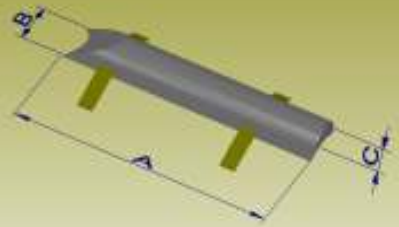
Tank anodes with Insert Type:



Ruder-Anoden

Rudder Anodes

Weld on Type



Zink (Zinc)

Bezeichnung Type	Maße (AxBxC) Dimensions (AxBxC)	Gewicht Weight	Loch Mittenmaß (D) hole distance (D)	RV-Artikel-Nr RV-Article-No.
ZN 30/14	500 x 100 x 55	14,0 Kg		KOK_00048

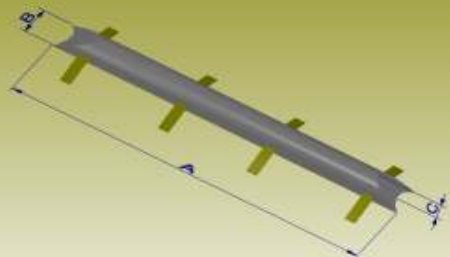
Aluminium (Aluminium)

Bezeichnung Type	Maße (AxBxC) Dimensions (AxBxC)	Gewicht Weight	Loch Mittenmaß (D) hole distance (D)	RV-Artikel-Nr RV-Article-No.
Al 30/5	500 x 100 x 55	7,0 Kg		KOK_00172

Ruder-Anoden

Rudder Anodes

Weld on Type



Zink (Zinc)

Bezeichnung Type	Maße (AxBxC) Dimensions (AxBxC)	Gewicht Weight	Loch Mittenmaß (D) hole distance (D)	RV-Artikel-Nr RV-Article-No.
ZN 62/28	1000 x 100 x 55	28,0 Kg		KOK_00036

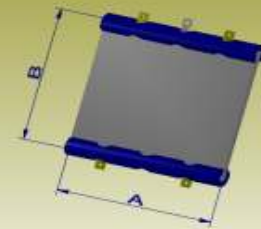
Aluminium (Aluminium)

Bezeichnung Type	Maße (AxBxC) Dimensions (AxBxC)	Gewicht Weight	Loch Mittenmaß (D) hole distance (D)	RV-Artikel-Nr RV-Article-No.
Al 62/11	1000 x 100 x 55	11,0 Kg		MOD_5507

Platten-Anoden

Plates Anodes

Bolt on Type



Zink (Zinc)

Bezeichnung Type	Maße (AxB) Dimensions (AxBxC)	Gewicht Weight	Loch Mittenmaß (D) hole distance (D)	RV-Artikel-Nr RV-Article-No.
PL18	500 x 500	18,0 Kg		KOK_00039
PL36	1000 x 500	36,0 Kg		KOK_00040

Auf Wunsch können auch andere Sondergrößen gefertigt werden
On request also other sizes can be manufactured

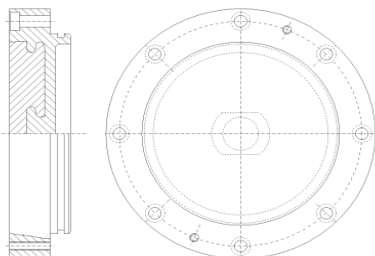
Sonderformen

Special Shapes

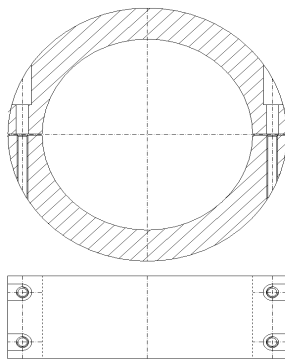
Sonderanoden werden nach Muster oder Zeichnung gefertigt

Spezial shapes are made from samples or drawings

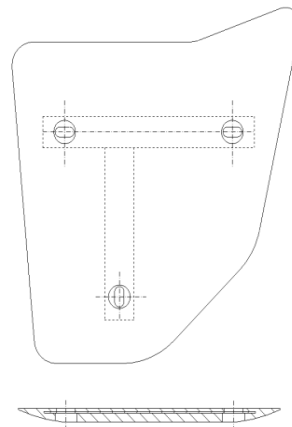
Propellerzinkschutz



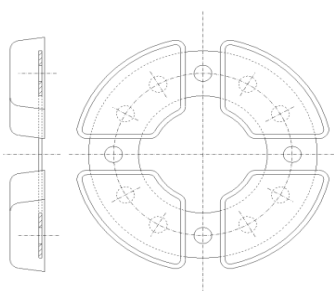
Wellenanoden



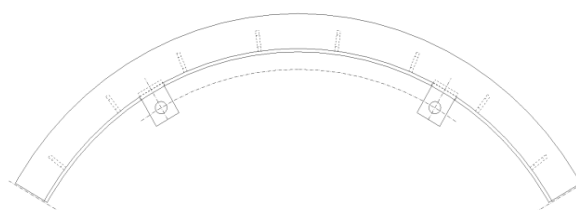
Plattenanoden



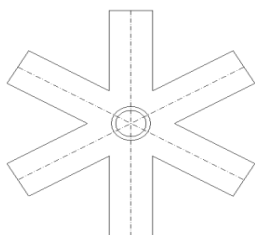
Ringanoden



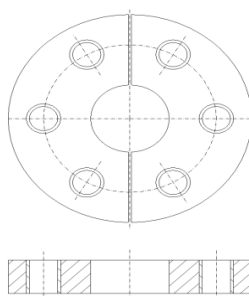
Ringanodensegmente



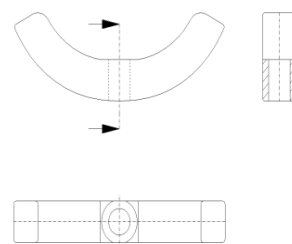
Sternanoden



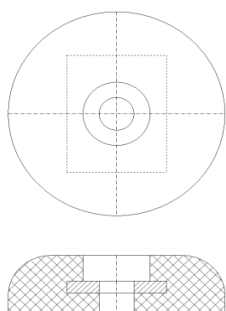
Zinkringe



Zinksegmente



Zinkscheiben



Zinkstopfen

